

## BYD Design

Technology is central to BYD's DNA, and the company's strong R&D ability is vital to its rapid development. Following its "technology-based, innovation oriented" development philosophy, BYD believes that technology has the power to change people's lives and make better the world we live in. BYD has successfully built a world-class platform for technological innovation on which world leading, BYD-inspired advanced technologies are continuously proven before introduction across many fields.

## BYD Commercial Vehicle

BYD's dedicated Truck Research Institute is mainly engaged in the R&D and design of the whole vehicle and chassis for pure electric trucks and special vehicles designed for use in logistics, construction, sanitation and port operations.



## 7.5T Multi-use Electric Truck — ETM6

### Technical Data

Overall Dimension (L/W/H)	mm	5,950/2,095/2,940	7,645/2,095/2,940
Kerb Weight	kg	3,680	3,750
G.V.W	kg	7,490	7,490
Payload	kg	3,810	3,740
Wheelbase	mm	3,360	4,200
Front/Rear Overhang	mm	1,135/1,455	1,135/2,310
Max. Speed	km/h	90	90
Max. Gradeability	%	30	30
Range*	km	200 (Full Load)	200 (Full Load)
Driving Mode		4×2	4×2
Tyres		215/75 R17.5	215/75 R17.5
Max. Motor Power	kW	150	150
Max. Torque	N·m	550	550
Battery Type		LiFePO4	LiFePO4
Battery Capacity**	kWh	126	126
Charging Power	kW	DC 120	DC 120
Charging Time	h	DC 1 (SOC 20%~100%)	DC 1 (SOC 20%~100%)

\*Actual range will vary depending upon driving/charging habits, speed, conditions, weather, temperature and battery lifecycle etc.

\*\*The battery capacity is initial capacity. It will decrease with the time and use.

### BYD Europe B.V.

Schiedam, The Netherlands

☎ +31-10-2070888    ✉ sales.europe@byd.com

BYD reserves the right to make modifications to vehicle information without prior notice. 0921-BPS-V2

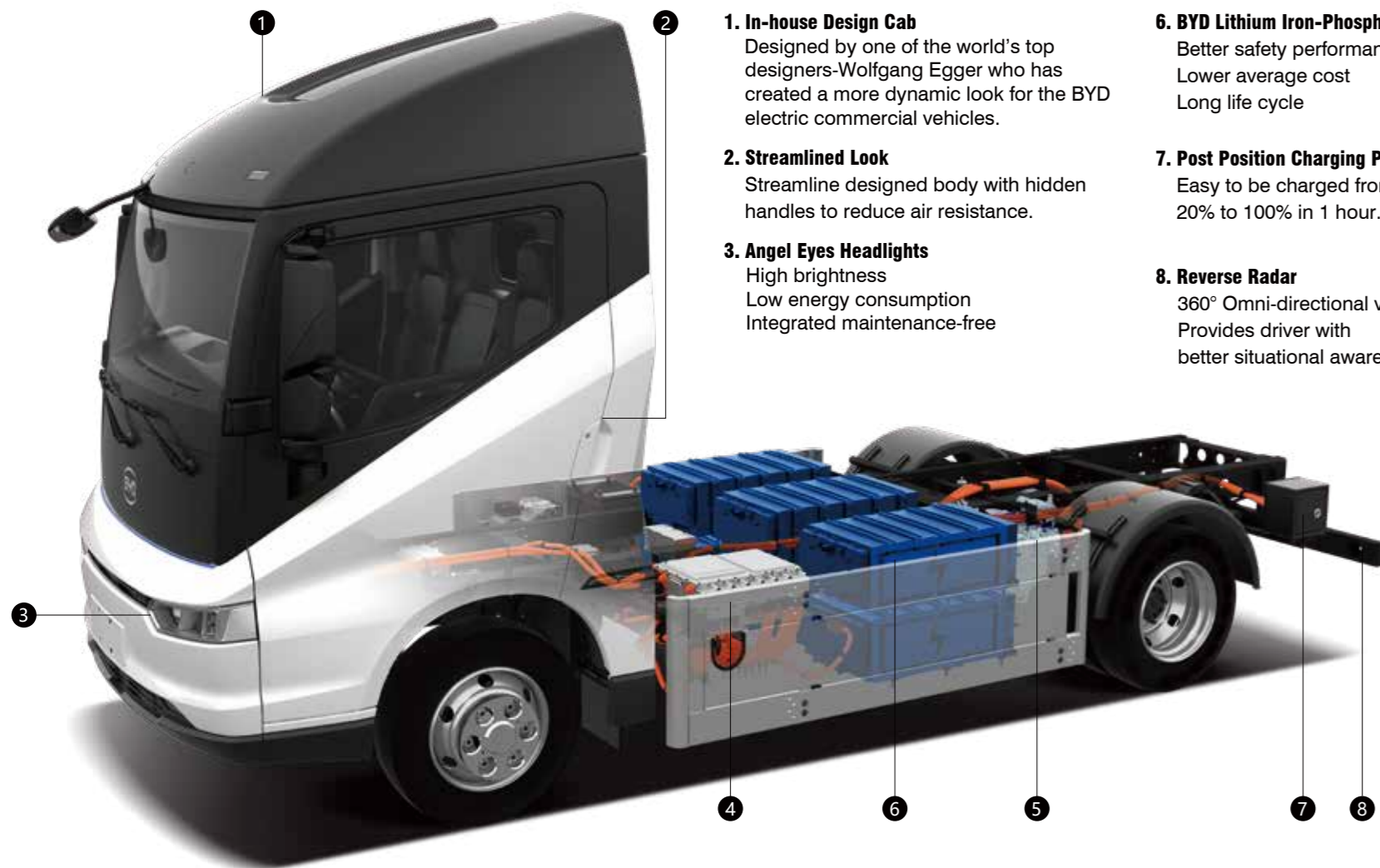


www.bydeurope.com



**ETM6**  
BYD eTruck. Carrying a better future





- 1. In-house Design Cab**  
Designed by one of the world's top designers-Wolfgang Egger who has created a more dynamic look for the BYD electric commercial vehicles.
- 2. Streamlined Look**  
Streamline designed body with hidden handles to reduce air resistance.
- 3. Angel Eyes Headlights**  
High brightness  
Low energy consumption  
Integrated maintenance-free
- 6. BYD Lithium Iron-Phosphate Battery**  
Better safety performance  
Lower average cost  
Long life cycle
- 7. Post Position Charging Port**  
Easy to be charged from SOC 20% to 100% in 1 hour.
- 8. Reverse Radar**  
360° Omni-directional vision  
Provides driver with better situational awareness

**4. 5 in 1 Integrated Controller**  
Less space/more compact  
Easy to maintain



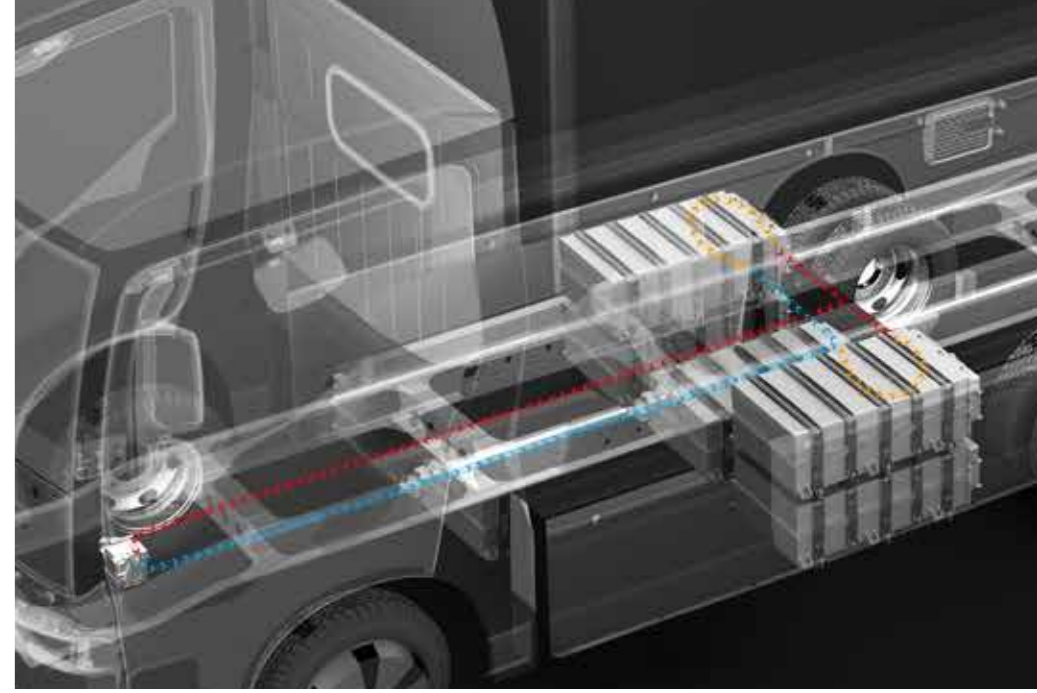
**5. Integrated Powertrain**  
95%+ transmission efficiency  
Low energy consumption  
Regenerative braking



- 1. Multifunction Steering Wheel
- 2. 8-inch TFT Dash Board
- 3. Push to Start
- 4. 10.1-inch LED Touch Screen
- 5. Gear Shift Knob
- 6. EPB (Electric Parking Break)
- 7. EPS (Electric Power Steering)
- 8. Ergonomic Driving Seats
- 9. Storage

### Battery Thermal Management System (BTMS)

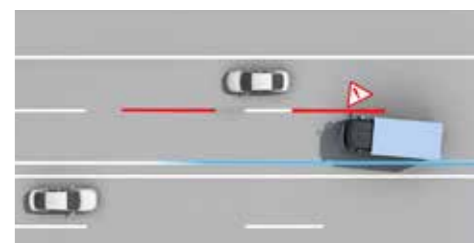
BTMS is a liquid thermal management system that guarantees the battery temperature stays at the optimum operational temperature. This increases the safety and reliability of the battery system and enables the vehicle to operate in extreme weather conditions.



### BYD Iron-Phosphate Battery

- Eco-friendly**  
Contains no heavy metals or toxic electrolytes and can be easily recycled.
- Long Service Life**  
7 security dimensions, 5 safety evaluation verifications, 4 battery security system levels.
- High Stability and Performance**  
Proven by numerous in-depth tests during the R&D phase.

### Advanced Driver Assistance Systems (ADAS)



LDW (Lane Departure Warning System)



FCW (Forward Collision Warning)



ACC (Adaptive Cruise Control)



AEBS (Advanced Emergency Braking System)